



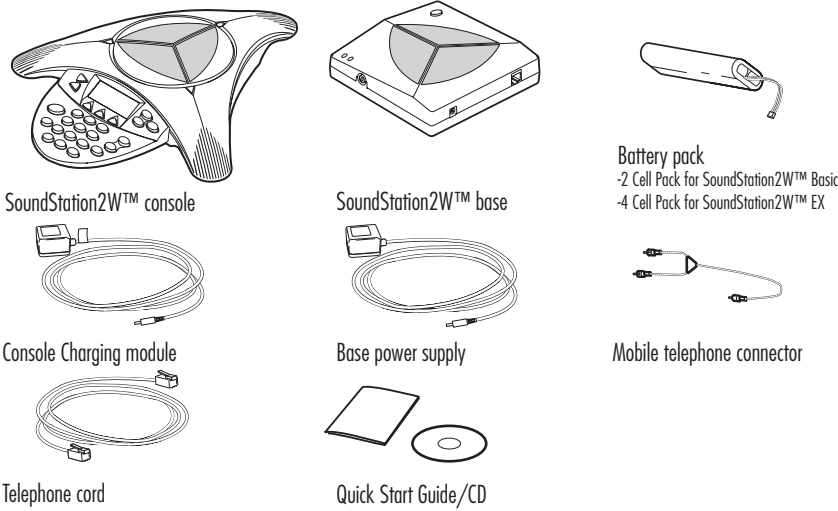
For information, contact your reseller or go to:
www.polycom.com

Polycom WW Headquarters:

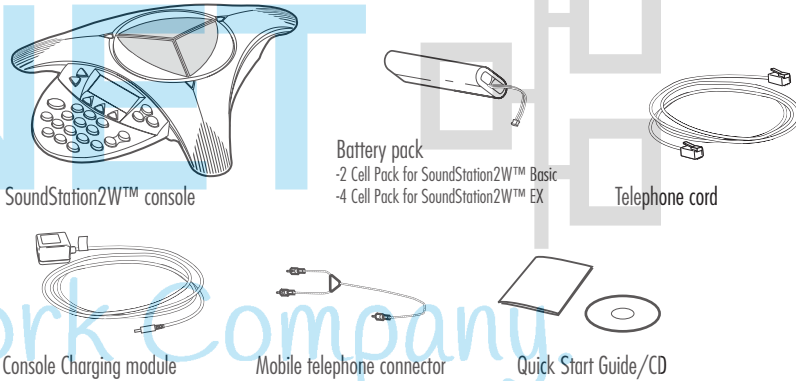
Polycom, Inc. Corporate Headquarters
6001 America Center Drive
San Jose, CA 95164
USA

Parts List

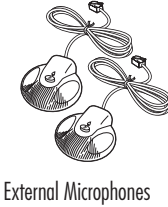
Console and Base Station Set



Console-Only Set



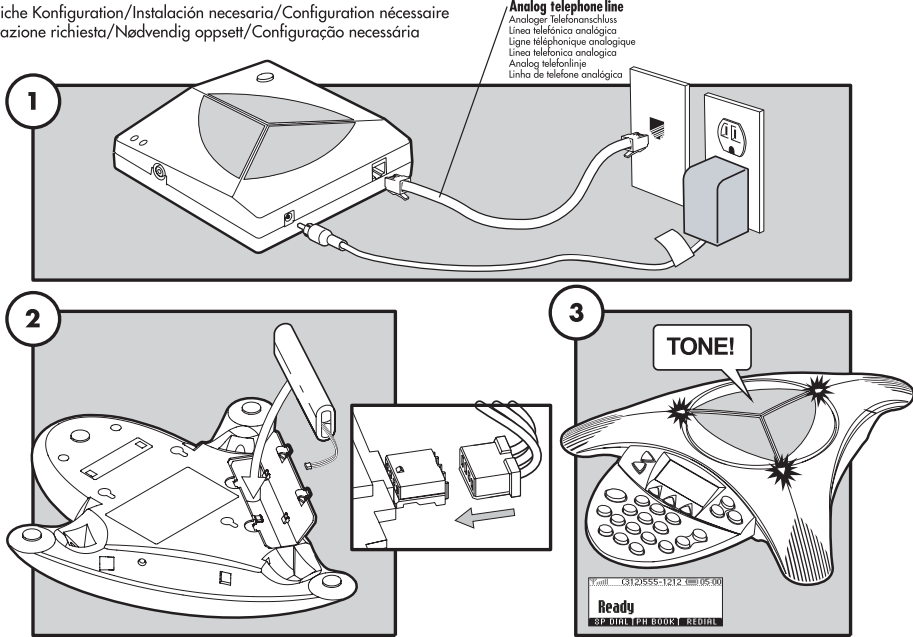
Optional Accessory



External Microphones

Required Setup

Erforderliche Konfiguration/Instalación necesaria/Configuration nécessaire
Configurazione richiesta/Nødvendig oppsett/Configuração necessária



Display

Anzeige/Pantalla/Affichage/Schermo/Skjerm/Display



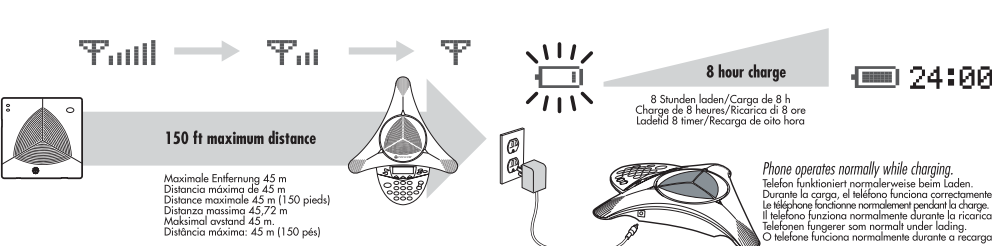
Battery Life
Lebensdauer Batterie/Vida útil de la batería/Durée de la batterie
Duração da bateria/Batterilevetid/Duração da bateria

This Phone's Number
Telefonnummer dieses Geräts/Número de este teléfono
Número de ce post/Numero del telefono/Nummeret til denne telefonen/Número deste telefone

Soft Key Functions
Display-Tasten Funktionen
Funciones de teclas de función
Fonctions des touches interactives
Tastchen dei tasti software
Funksjoner for programmerbare tastar
Funções com teclas programáveis

Signal Strength

Signalstärke/Intensidad de la señal/Intensité du signal
Potenza del segnale/Signalstyrke/Força do sinal



Recharge Battery

Batterie laden/Recargar batería/Recharger batterie/Ricaricare batteria
Lad opp batteriet/Recarga da bateria

Console

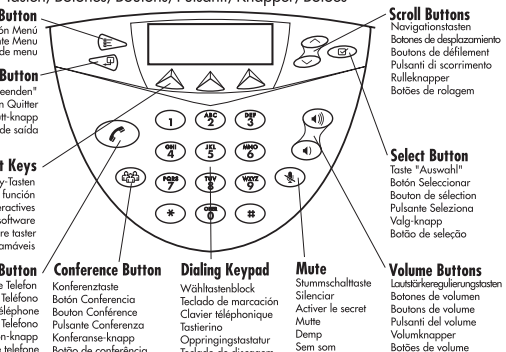
Konsole/Consola/Console/Console/Konsoll/Console

LED Indicators
LED-Anzeigen/Indicadores LED/Voyants lumineux LED
Lampeindikatorer / Indicadores LED



Buttons

Tasten/Botones/Boutons/Pulsanti/Knapper/Botões



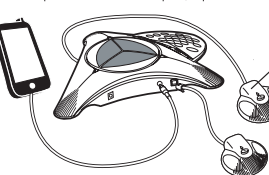
Additional Setup Options

Weitere Konfigurationsmöglichkeiten/Otras opciones de instalación/Autres options de configuration/Opzioni di configurazione aggiuntive
Ekstra oppsettalternativer/Opções de configuração adicional

External Connections
Externe Verbindungen/Conexiones externas/Connexions externes
Connessioni esterne/Eksterne tilkoblinger/Conexões externas

Mobile Phone
Mobiltelefon/Telefono móvil/Portable
Cellulare/Mobiletéléphone/Telefone móvel

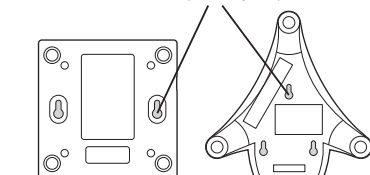
Adapter may be needed depending on phone type
Adapter abhängig vom Telefentyp erforderlich
Se requerirá un adaptador en función del tipo de teléfono.
Selon le type de téléphone, un adaptateur peut être nécessaire.
Alcuni telefoni possono richiedere un adattatore.
Deelkroon kan vereisen adapter, afhankelijk van telefoontype.
Talvez seja necessário usar um adaptador, dependendo do tipo de telefone.



External Microphones
Only available on expandable models
Nur auf erweiterbaren Modellen verfügbar
Solo está disponible en los modelos expandibles.
Disponible seulement sur les modèles extensibles.
Disponibile solo su modelli espandibili.
Bare tilgjengelig på utvidbare modeller.
Disponível somente em modelos dimensionáveis

Wall Mount

Wall Mount Holes
Wandbefestigungslöcher
Agujeros en la pared
Trous pour montage mural
Fori per montaggio a parete
Hull for veggmontering
Furos para montagem na parede

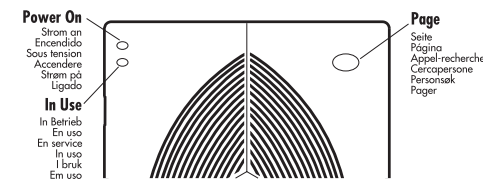


Bottom of Console and Base Station
Unterteil für Konsole und Basis/Parte inferior de la consola y estación base
Dessous de la console et station de base/Parte inferiore della consola e stazione base
Bunn på konsoll og hovedapparat/Parte interior do console e estação da base

Base Station

Basis/Base/Base/Base/Hovedapparat/Base

LED Indicators
LED-Anzeigen/Indicadores LED/Voyants lumineux LED
Lampeindikatorer/Indicadores LED



Auxiliary Setup
Hilfseinrichtung/Configuração auxiliar/Configuration auxiliaire
Impostazione ausiliaria/Ekstra oppsett/Configuração complementar

